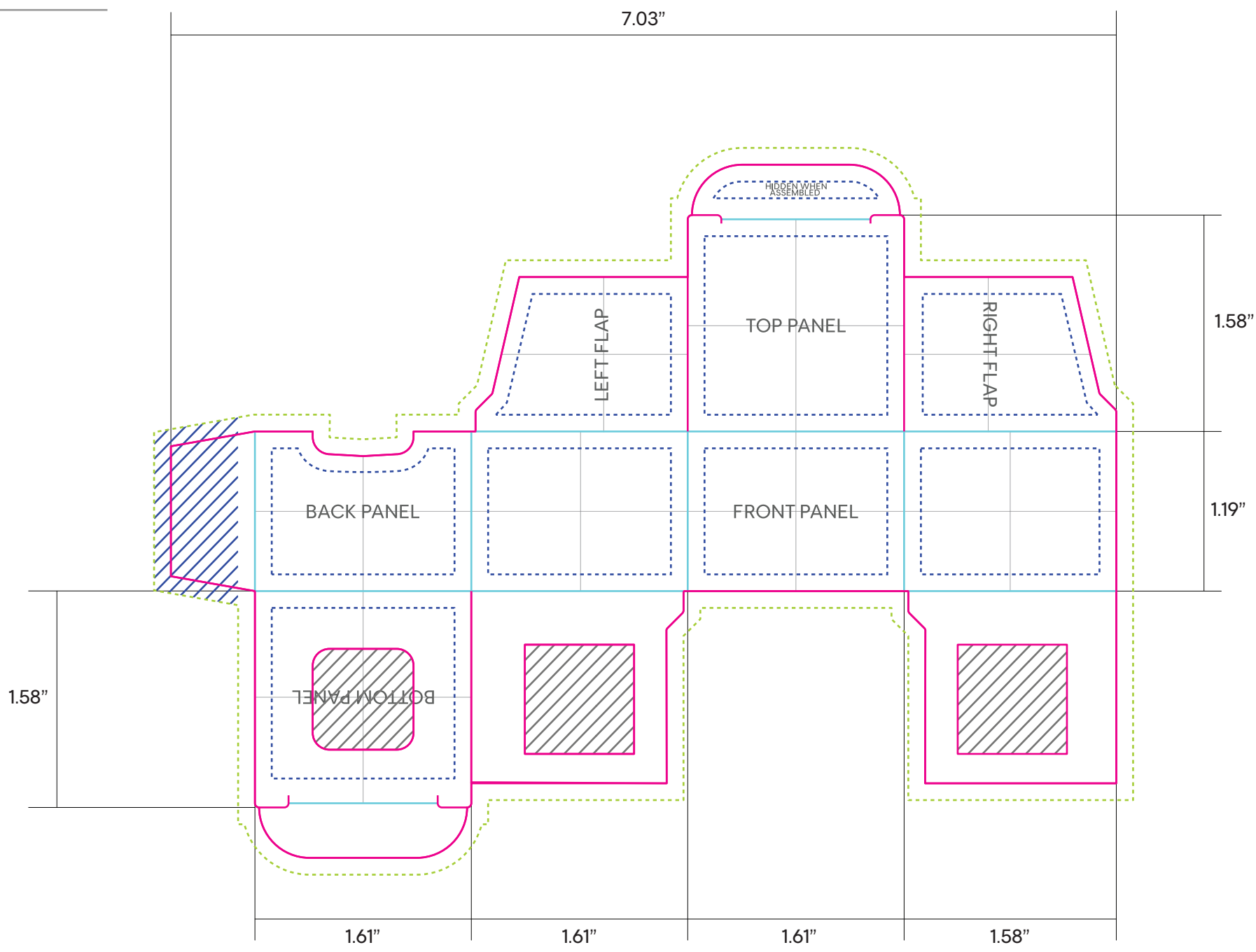


# Core Tuck View Port Box -Exterior



# IMPORTANT INSTRUCTIONS

- Please send all artwork in .AI file format.
- **Do not edit or move** any of the Guideline Layers.
- Please **package .AI files** with all fonts/typefaces and embedded content.
- Please keep all text editable and **do not create outlines from text**.
- InDesign and PDF files are not acceptable as print files.
- Please ensure Document Color Mode is set to **CMYK instead of RGB**.
- Please flatten or rasterize **all transparencies**.

Content Area

The content area is 1/8" (.125") from cut lines. Important artwork (especially text) should be placed inside this area, as labels can shift slightly during the cutting process.

Cut/Trim Line

Keeping artwork away from these edges ensures that it won't accidentally be cropped during Production.

Bleed Line

Any art (such as your background color) that should print all the way to the edge of the material should extend at least to these lines.

Fold Area

Important artwork (especially text) should not be placed in fold area.

Glue Area



No artwork should go in the Glue Area.

Template is built at 100%

# Core Tuck View Port Box - Interior

